

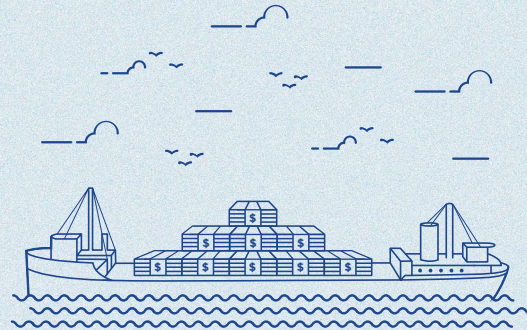
PORT OF HAMILTON

— SOUTHERN ONTARIO'S GATEWAY TO THE WORLD —



\$350 MILLION

OF ATTRACTED INVESTMENT SINCE 2009



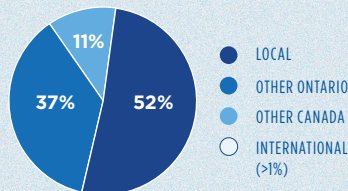
PORT OF HAMILTON
CONTRIBUTES
\$6 MILLION
IN LOCAL PROPERTY
TAXES EACH YEAR



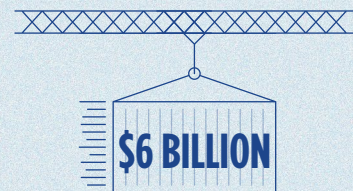
ONE OF HAMILTON'S TOP
INDUSTRIAL/COMMERCIAL
TAX PAYERS

**89% LOCAL/ONTARIO
PURCHASING**

HPA'S purchases (by dollar value)



CARGO CONNECTED TO



**OF ECONOMIC ACTIVITY
IN ONTARIO**

ON SITE OPERATIONS AT THE PORT OF HAMILTON HAVE A **\$416 MILLION** IMPACT ON ONTARIO'S GDP

▲
ECONOMY

CARGO



647
VESSEL CALLS

197
OVERSEAS
VESSELS

3.2
MILLION MT
OVERSEAS
CARGO



SUPPLY CHAINS

STEEL • AGRI-FOOD •
CONSTRUCTION MATERIALS

STEEL MAKING	6.3 MILLION MT
FINISHED STEEL	863,882 MT
AGRICULTURAL	3.5 MILLION MT
AGGREGATES	281,567 MT
LIQUID	405,126 MT
GENERAL & OTHER	243,586 MT
TOTAL TONNAGE 2018	11.6 MILLION MT

RAIL CARS



28%

OF ALL CANADIAN GREAT LAKES -
ST. LAWRENCE SEAWAY CARGO MOVES
THROUGH THE PORT OF HAMILTON

THE CARGO TRANSITING
THE PORT OF HAMILTON
HAS A VALUE OF

\$3+
BILLION

17,701 m³
PROJECT CARGO IN 2018



AGRI-FOOD



\$200 MILLION
IN AGRI-FOOD INVESTMENT SINCE 2009

\$1

BILLION

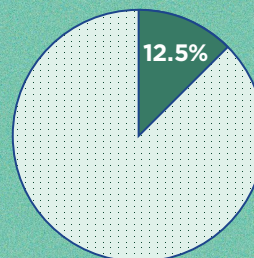
AGRI-FOOD:

BILLION DOLLAR
INDUSTRY IN HAMILTON

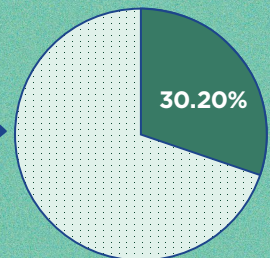
HOME TO
4 GRAIN



EXPORT/PROCESSING
FACILITIES



2010



2018

● AGRICULTURAL TONNAGE AS A % OF TOTAL PORT TONNAGE

FOOD BUSINESSES AT THE PORT

Soybeans, corn, wheat, canola, sugar,
packaged foods, fertilizer, flour milling,
edible oils, bio-diesel, food packaging

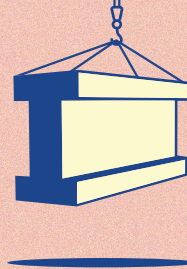
EMPLOYMENT



ON-SITE EMPLOYMENT AT THE
PORT OF HAMILTON
HAS GROWN
30%
SINCE 2009

\$261 million

in labor income is pumped back into the
economy through personal spending



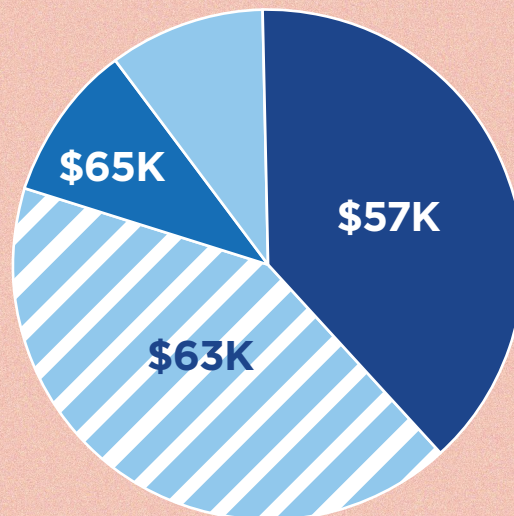
38,000

JOBS IN ONTARIO ARE
CONNECTED TO THE
CARGO THAT TRANSITS
THE PORT OF HAMILTON

PORT JOBS ARE GOOD JOBS

JOBS AT THE PORT OF HAMILTON ARE
CONCENTRATED IN HIGH-PAYING FIELDS:

- TRANSPORTATION &
WAREHOUSING (38%)
- MANUFACTURING (42%)
- ENGINEERING/
CONSTRUCTION (10%)
- ALL OTHER (10%)



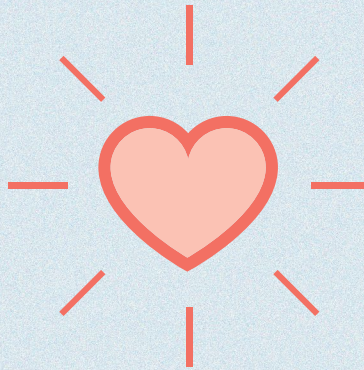
WAGES AT THE PORT ARE **20% HIGHER** THAN THE ONTARIO AVERAGE

COMMUNITY



GIVING BACK TO OUR PORT CITY

\$268,265
CASH AND IN-KIND
DONATIONS
IN 2018



\$1.18+
million
donated over the last
5 years

SUCCESS WE'VE HELPED SUPPORT



1,250 children
directly impacted by CityKidz programming



300 vessel crews
welcomed annually by the Mission to Seafarers



23 annual scholarships
for McMaster University students



Over 100 at-risk youth
provided programming through Liberty for Youth



\$20,000 tuition fund
for Mohawk College Supply Chain
Management Program



1000 cattails
planted in Cootes Paradise Marsh



8 suits of sails
for Royal Hamilton Yacht Club CANSail program



300+ residents
attended public tours aboard the Hamilton
Harbour Queen



26,000 students
participated at the Hamilton Children's Water
Festival since 2008



350 visitors
welcomed during Doors Open Hamilton



ENVIRONMENT



\$14 MILLION
COMMITTED TO CLEAN
RANGLE REEF

ENERGY PROJECTS COMPLETED IN 2018

SAVE 1,369,000

kWh/year



ENOUGH TO POWER

114
HOMES

REGULAR ENVIRONMENTAL
INSPECTIONS OF PORT PROPERTIES

GREEN MARINE FOUNDING MEMBER

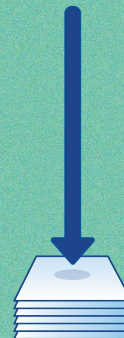
HAMILTON HARBOUR REMEDIAL
ACTION PLAN STAKEHOLDER SINCE

1986

650m²

OF SHORELINE RESTORED AT
SHERMAN INLET

Sherman Inlet & Hobson Pond
preserved as natural spaces



**PAPER
USAGE**

REDUCED BY

19%
IN 2018



12 NEW BEE HIVE BOXES INSTALLED AT PIER 15 IN PARTNERSHIP WITH HUMBLE BEE



NEW POLLINATOR
GARDEN AT 605
JAMES ST. NORTH

Over \$500,000

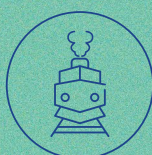
invested to **reduce dust**
on port properties in 2018

BAGS OF GARBAGE
COLLECTED SINCE 2014 THROUGH
TEAM UP TO CLEAN UP



1 SHIP

=



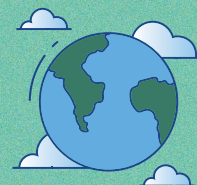
301 RAIL CARS

=



963 TRUCKS

**Marine has the
lowest carbon
footprint of any
mode of cargo
transportation**



PORT PARTNERS

AGRICO CANADA LTD.
AIR KOOL LTD.
ARCELORMITTAL DOFASCO
BAY AREA RESTORATION COUNCIL
BELL & MACKENZIE CO LTD.
BIOX CORPORATION
BREWER BROTHERS MARINE
BUNGE CANADA
BURLINGTON SAILING AND BOATING CLUB
CANADA CENTRE FOR INLAND WATERS
CANADIAN ASPHALT INDUSTRIES INC.
CANADIAN MOTORCYCLE ASSOCIATION
CCR MACHINERY MOVERS
CHAPEL STEEL CANADA LTD.
CITY KIDZ
CLARE MOORE REFRIGERATION
CN RAIL
COLLECTIVE ARTS BREWING
BIRLA CARBON CANADA LTD.
COMPLETE MARINE REPAIRS & SERVICE
CONTANDA CANADA INC.
CP RAIL
CRAWFORD RAIL PRODUCTS
DR. PRAY & DR. MATOS
DR. WALTER OWSIANIK
FASTENAL COMPANY CANADA
FEDERAL MARINE TERMINALS
FIBRE LAMINATIONS LTD.
FISHERMAN'S PIER
FLUKE TRANSPORTATION GROUP
G3 CANADA LTD.
GAS FIX INC.
GENESEE & WYOMING CANADA INC.
GORD JAMES TRUCKING
HAMILTON CONTAINER TERMINAL
HAMILTON HALTON BRANT REGIONAL
TOURISM ASSOCIATION

HAMILTON MEAT PIE CO.
HAMILTON TIGER CATS
HAMILTON WATERFRONT TRUST
HANDLING SPECIALTY MANUFACTURING
HARBOUR WEST MARINA
HCE ENERGY INC.
HEDDLE SHIPYARDS
HIGHROAD LOGISTICS INC.
HMCS HAIDA NATIONAL HISTORIC SITE
HOOPER ENGINEERED VESSELS
INTERNATIONAL
HYDRONIC PARTS GROUP LTD.
IKO INDUSTRIES LTD.
IMPERIAL OIL
INTELLIGARDE
INTERNATIONAL LONGSHOREMEN'S
ASSOCIATION
J.S. COWAN CONSULTING
JOSEPH HAULAGE CANADA CORP.
K+S WINDSOR SALT LTD.
KRISALANN MARINE SERVICES
KUBES STEEL INC.
LAFARGE CANADA
LAIDLAW CARRIERS BULK LP
LAKESHORE SAND CO. LTD.
MACRAE MARINE LTD.
MARITIME DATA CENTRE
MARITIME EMPLOYERS ASSOCIATION
MAVIRO CATALYST
MCASPHALT INDUSTRIES LTD.
MCC CONTROLS INC.
METL-SPAN
MISSION TO SEAFARERS SOUTHERN
ONTARIO
NADRO MARINE SERVICES
NAVY LEAGUE OF CANADA.
NORTH AMERICAN TILLAGE TOOLS
OCEAN ONTARIO TOWING INC.

PARKLAND INDUSTRIES
PARRISH & HEIMBECKER LTD.
QUEBEC STEVEDORING LTD.
RAILCARE INC.
RANKIN CONSTRUCTION INC.
REFFICIENT
REVOLUTION ENVIRONMENTAL SOLUTIONS
RICHARDSON INTERNATIONAL LTD.
RK MAGNETICS INC.
RNR PATIENT TRANSFER
ROYAL HAMILTON YACHT CLUB
RS MATERIAL HANDLING
RUETGERS CANADA INC.
SAMUEL, SON & CO.
SEABOARD LIQUID CARRIER LTD.
SECURITE FILE STORAGE LTD.
SHELL CANADA
SOLETANCHE BACHY CANADA
STANPAC INC.
STEEL CITY SHRED INC.
STERLING FUELS LTD.
STERN LABORATORIES INC.
SUCRO CAN INC.
SUN CANADIAN PIPELINE CO.
SUNRISE METALS INC.
SYLVITE GROUP OF COMPANIES
TORONTO TANK LINES
TRANSCARE
TRANS-NORTHERN PIPELINES- BURLINGTON
SHIP CANAL
TRAVELERS TRANSPORTATION SERVICE
TWO COUGARS CAFÉ
UNITED RENTALS
VIVVO TRANSPORT LTD.
VOPAK TERMINALS CANADA INC.
WINDCHASER CARRIER LOGISTICS
YELLOWLINE ASPHALT



GREEN MARINE MEMBER

HAMILTONPORT.CA

605 James St. North
Hamilton, ON L8L 1K1
P: 905.525.4330
Toll-Free: 1-800.263.2131
@HAMILTONPORT

PROUD MEMBERS

