



“Sharing Our Harbour”

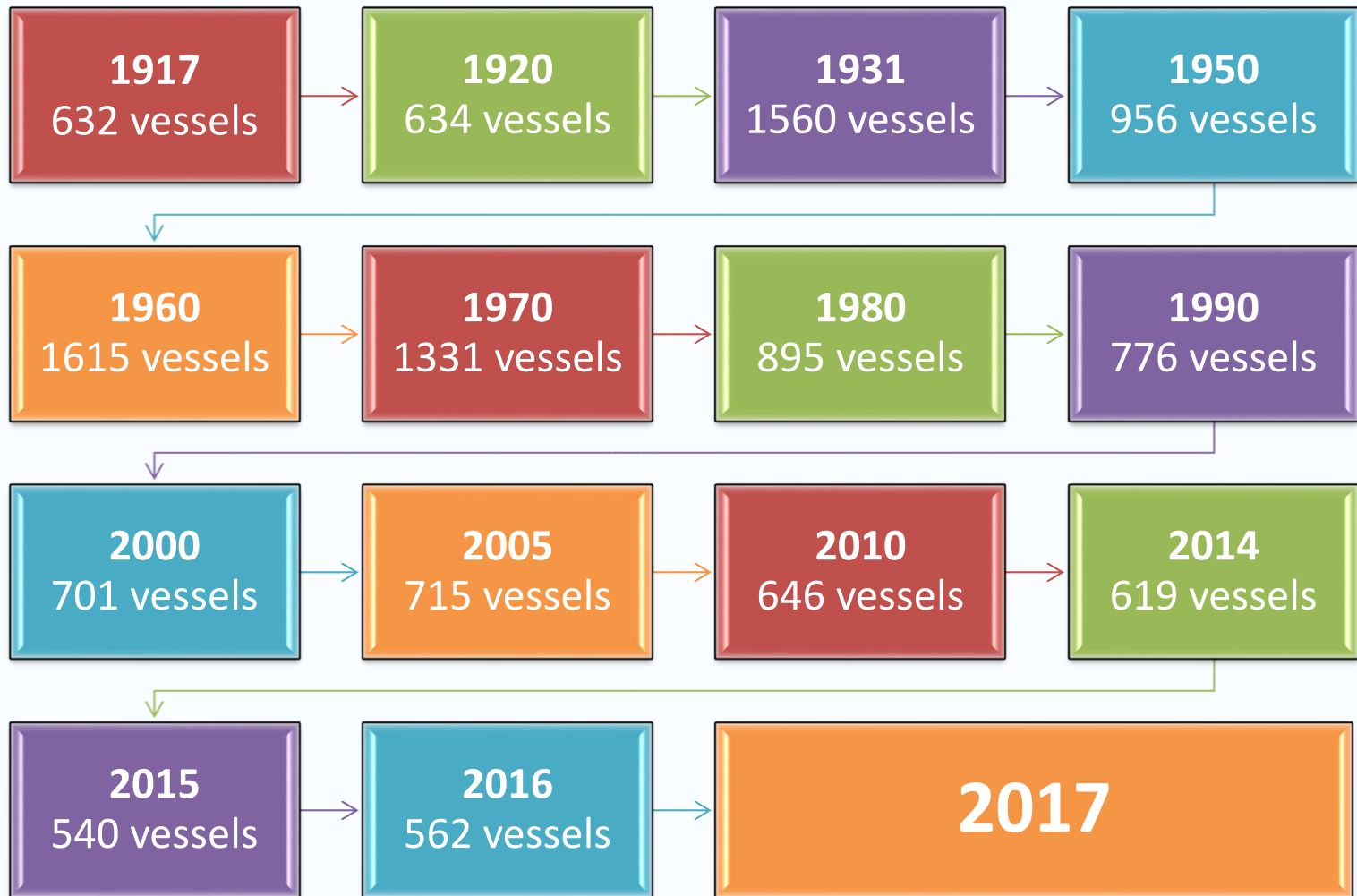
Commercial Shipping

Vicki Gruber,
Manager Port Security &
Harbour Master

The Port of Hamilton is the
largest
Canadian Great Lakes port!

9,277,282 Metric Tonnes
in 2016

100 Years of Vessel Traffic



*What type of vessels
operate in the waters of
the
Hamilton Harbour?*

TUGS



Omni Richilieu
24.27 meters / 79.6 feet

Vigilant I
23.46 meters / 76.96 feet



TANKERS

Sterling Energy
64 meters / 210 feet



TANKERS - FOREIGN



Jo Spirit – 107.35 meters / 352.2 feet

BULK CARRIERS

– Self-discharging



John B. Aird – 222.5 meters / 730 feet

BULK CARRIERS



Spruceglen— 222.54 meters / 730 feet

Kaministiquia— 222.54 meters / 730 feet



BULK CARRIER - FOREIGN



Federal Saguenay – 200 meters / 656 feet

TUGS AND BARGES



Evans McKeil (tug) – 31.9 meters / 105 feet

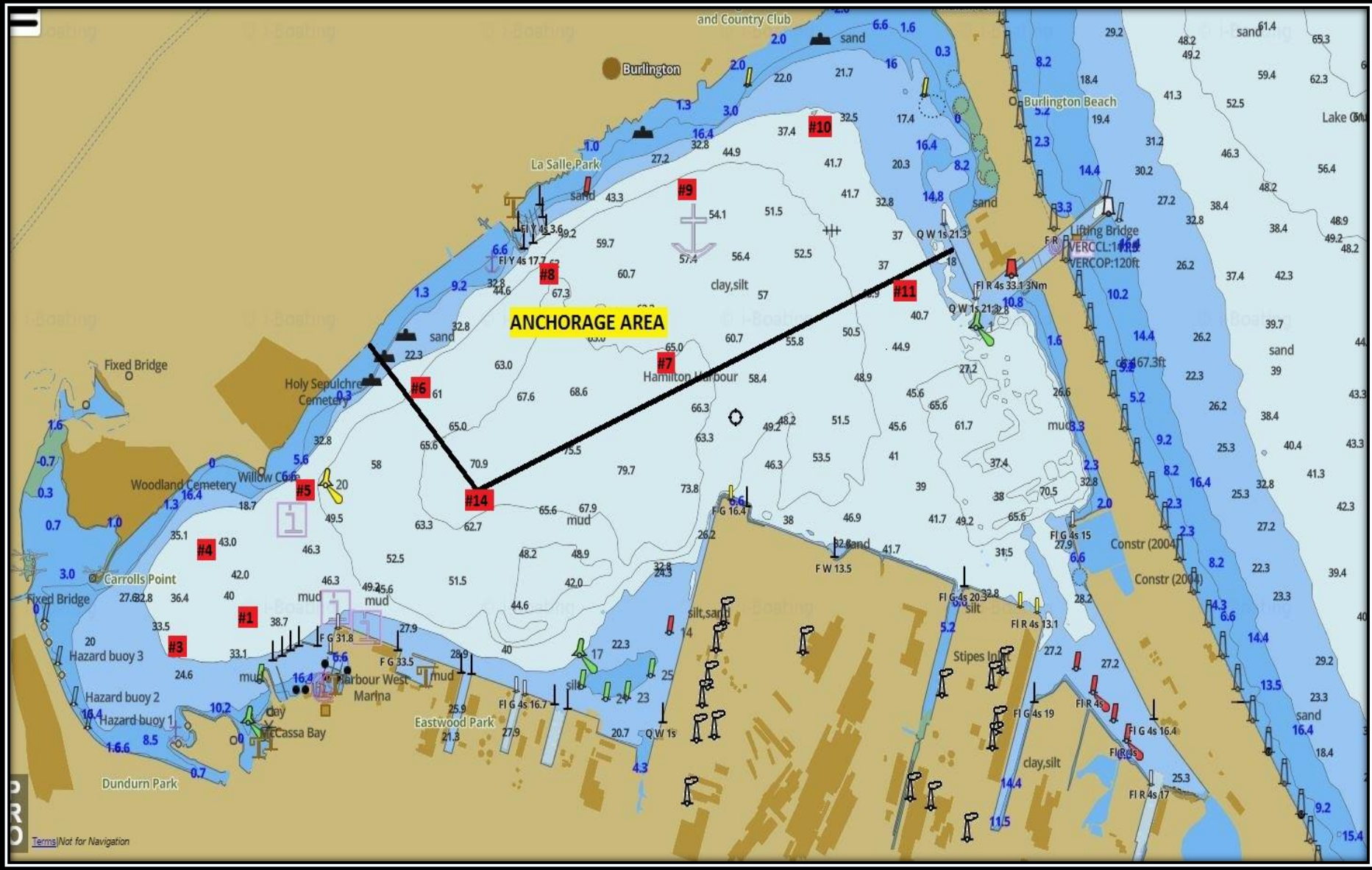
McCleary's Spirit (barge) – 115.8 meters / 380 feet

TOTAL – 147.7 meters / 485 feet

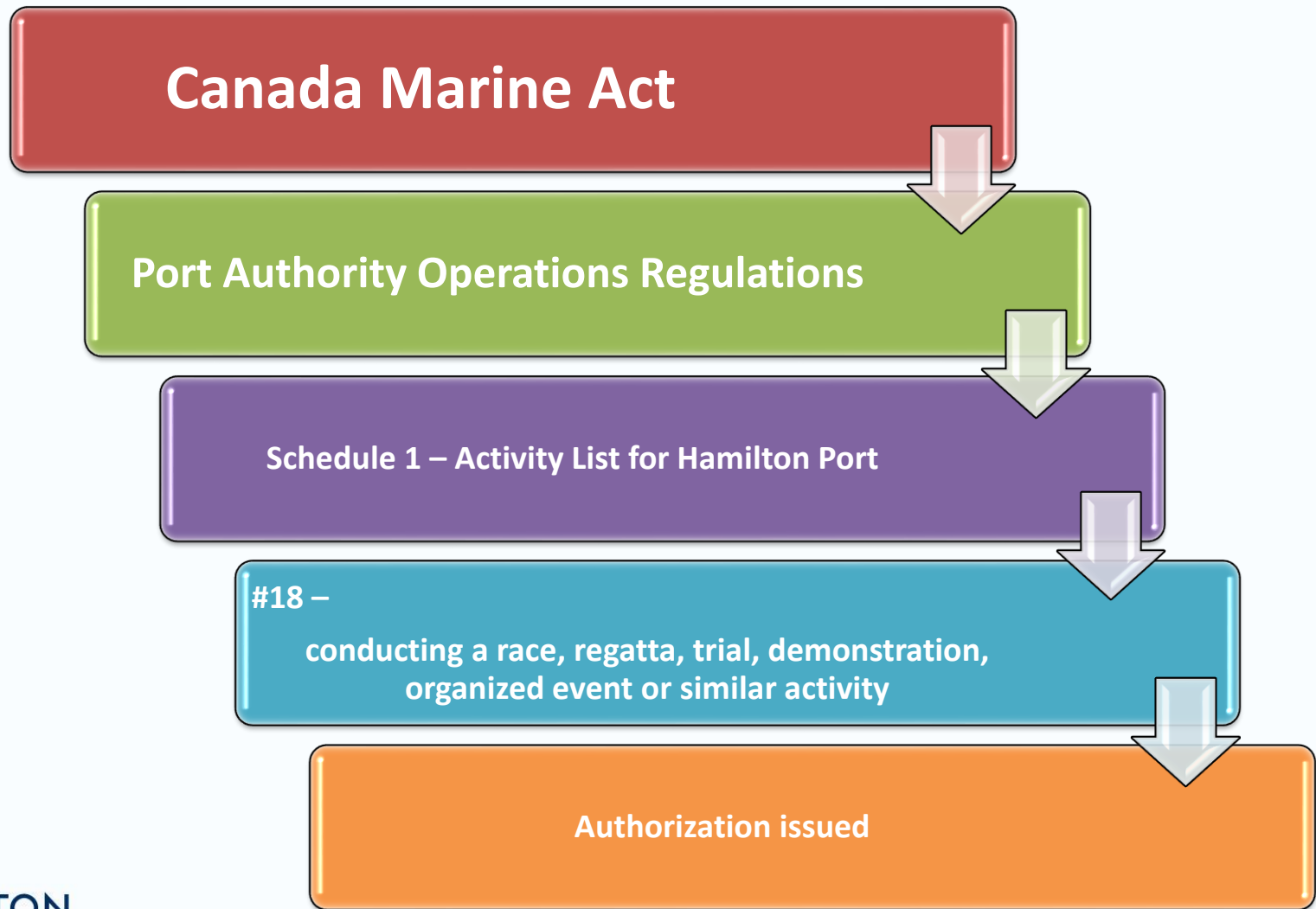
HAMILTON HARBOUR







Why does the Port get involved?





OPERATION ***SAFE AND SOBER***

KEEPING HAMILTON HARBOUR SAFE...
ONE BOAT AT A TIME

VISIT WWW.HAMILTONPORT.CA OR
WWW.HAMILTONPOLICE.ON.CA
TO LEARN MORE ABOUT:

SAFE NAVIGATION - ESPECIALLY AROUND LARGE
COMMERCIAL VESSELS IN HAMILTON HARBOUR

SOBER BOATING

SAFE OPERATION TIPS

IN PARTNERSHIP

HAMILTON
PORT
AUTHORITY



HAMILTON
POLICE
SERVICE



The Results:

- Over 100 boaters were educated on the campaign at local marinas and boat launches.
- Of the 337 vessels stopped during the campaign, 131 (39%) had 1 or more violations present.
- Many of the issues police found were minor and were dealt with by way of verbal warnings and education. A total of 185 warnings were given, representing 85% of cases.
- Several boaters who received warnings upon initial inspection were stopped later in the season and found to be fully compliant.
- Police laid 32 charges during the campaign:
25 under the Canada Shipping Act; 6 under the Liquor Licence Act; and 1 Criminal Code.
- On Labour Day Weekend an impaired boater was taken off the water and ultimately charged with Refuse Breath Sample.

Are there speed limits in the Harbour?



Pursuant to section 56 (1) (b) of the Canada Marine Act

Vessel Speeds

- (a) No vessel shall move in the harbour at a rate of speed that may endanger life or property, and every large vessel when passing any floating property, small vessel or open boat in the harbour shall reduce its speed to ensure the safety of such floating property, small vessel or open boat.
- (b) Without restricting the generality of subsection (1), no vessel shall move at a rate of speed in excess of 50 kilometers per hour, and no vessel shall approach within 150 meters of any wharf, quay, wall, pier, or other landing place or pass through any recognized anchorage or within 150 meters of any shoreline within the harbour at a rate of speed in excess of 10 kilometers per hour.

Burlington Canal Regulations –

3. No vessel shall move in the canal at a speed greater than,

(a) if the vessel is 80 m or less in length, seven miles per hour, or

(b) if the vessel is more than 80 m in length, the lowest speed at which the vessel can be navigated safely.

Promote safe boating practices in the Hamilton Harbour between commercial and recreational vessels

SAFETY ABOVE ALL ELSE